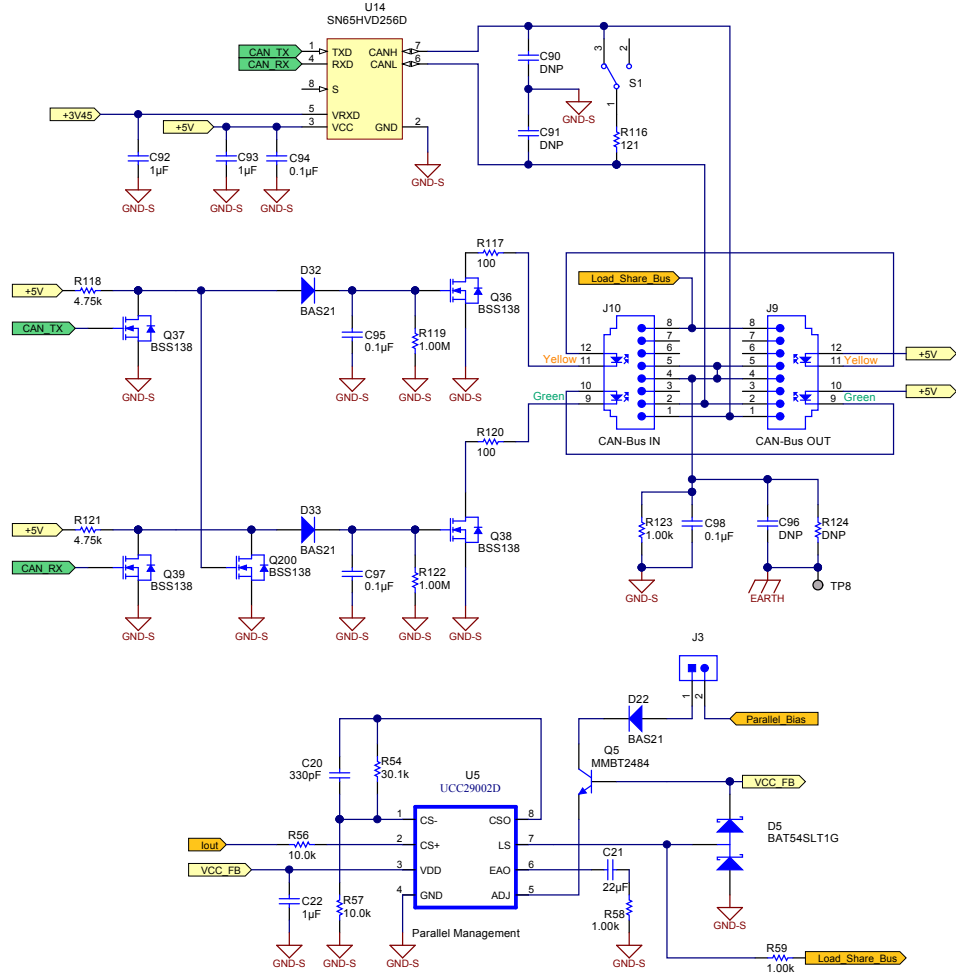
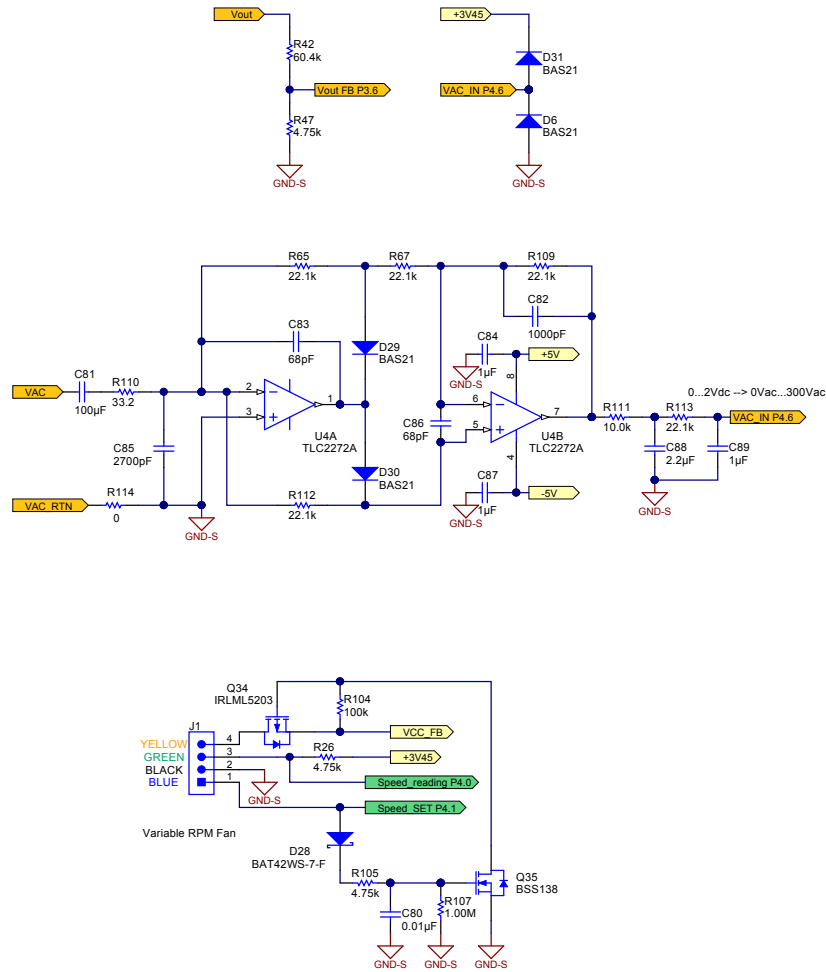


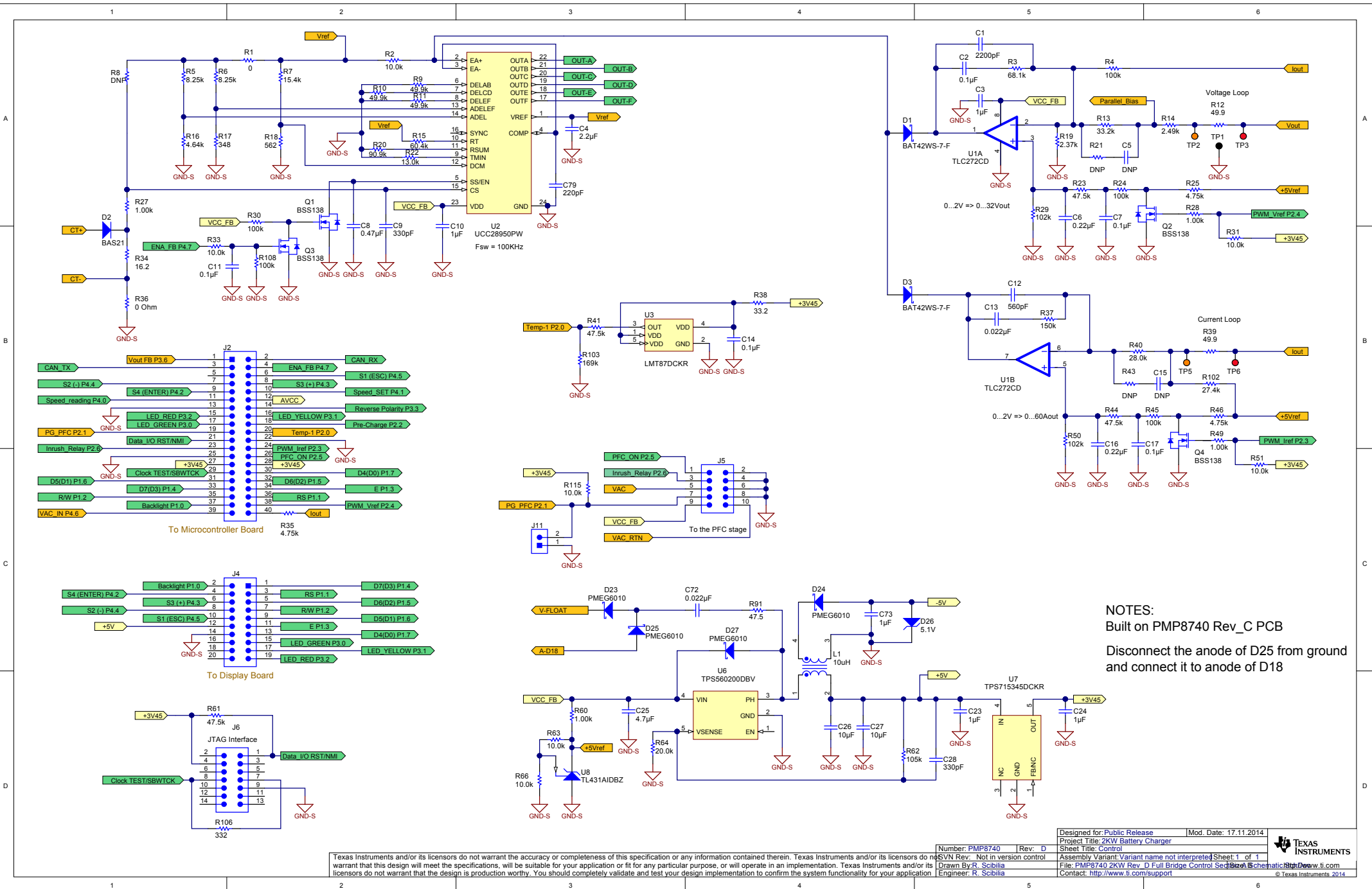
NOTES:

Built on PMP8740 Rev_C PCB

Ref. Des. > 199 have been added on the PCB



NOTES:
 Built on PMP8740 Rev_C PCB
 Ref. Des. > 199 have been added on the PCB
 Disconnect R112 from ground and connect it to pin 2 of U4A



NOTES:
Built on PMP8740 Rev_C PCB
Disconnect the anode of D25 from ground and connect it to anode of D18